

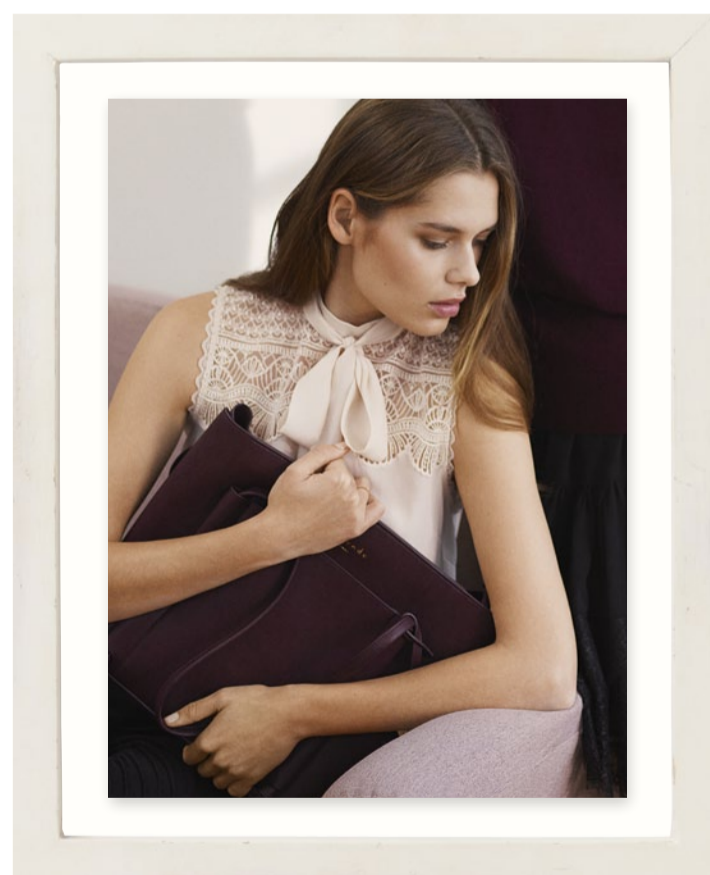
FALL 2018  
COLLECTION



## *Bags Collection*

*The Fall 2018 collection of Rosemunde bags unfolds a refined range of must-haves elevating a woman's look. Your new companion for Fall may be the new chic quilted chain bag or quilted shopper in deep black. Or choose from our classic clutch that can be worn cross body or around the wrist or our one handle bucket bag with lots of room for your necessities. Alternatively, fall in love with our big shopper with detachable clutch inside.*

*Will be delivered in July.*



FOR MORE INFORMATION, PLEASE CONTACT YOUR LOCAL SALES AGENT OR VISIT US AT THE FAIRS



rosemunde

COPENHAGEN

*A luxury feeling - every day*

ROSEMUNDE APS . STAKTOFTEN 2 . DK-2950 VEDBÆK . DENMARK  
+45 39 64 01 90 . INFO@ROSEMUNDE.COM . WWW.ROSEMUNDE.COM